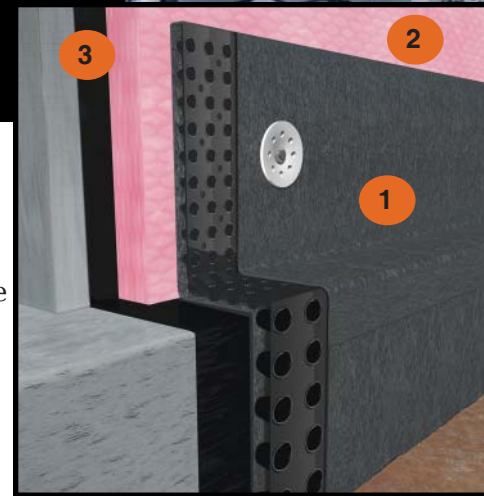


# New! DrainStar® Z-Drain

Available only from Tremco Barrier Solutions.

**High-performance drainage for your below-grade foundation walls eliminates the time, cost and labor of drain tile and gravel. Outperforms all other stripdrains!**

New DrainStar Z-Drain, exclusively engineered for Tremco Barrier Solutions, works in concert with the TUFF-N-DRI® Basement Waterproofing System to effectively move water down the foundation wall, across the footer, and down to the lowest point on the home...next to the footer. The system prevents hydrostatic head pressure against the foundation wall, virtually assuring a dry, comfortable basement for your new homeowner. DrainStar Z-Drain eliminates the need for drain tile and gravel, and is installed by the same Select Barrier Solutions Contractors that apply the best waterproofing system in America – TUFF-N-DRI.



**Illustration 1.**

The above illustration shows how DrainStar Z-Drain works in combination with the TUFF-N-DRI Basement Waterproofing System. The three-part system protects, insulates, and drains

- 1) DrainStar Z-Drain
- 2) WARM-N-DRI Foundation Board
- 3) TUFF-N-DRI Basement Waterproofing Membrane

**AN INDUSTRY FIRST! ELIMINATION OF "DEFECTIVE OR INADEQUATELY FUNCTIONING DRAINAGE SYSTEM" EXCLUSION FROM WARRANTY!**

Because Z-Drain is specifically designed to increase even further the effectiveness of the industry-best TUFF-N-DRI system, we have the confidence to eliminate the waterproofing warranty exception of "inadequate drainage systems". You get a 30-Year Performance Warranty free from the requirement of a functioning drainage system.

**SAVE MONEY! SAVE TIME! ELIMINATE DRAIN TILE AND GRAVEL!**

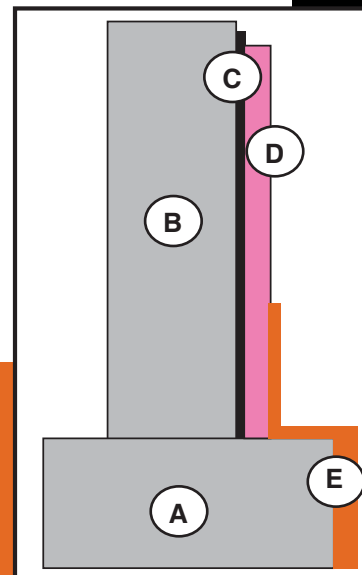
Add up THE EXPENSE TO YOUR BUSINESS...the product cost of gravel and drain tile, the production time required to install the system, the need to coordinate the labor of another subcontractor, the cost of stone-slingers and other equipment. Using drain tile and gravel is an expensive proposition. New DrainStar Z-Drain is installed by the same contractors who apply your TUFF-N-DRI Basement Waterproofing System, at the same time the TUFF-N-DRI is applied, with no additional crews or equipment. That saves you production time, which means you save dollars on each and every home.

**OUTPERFORMS ALL OTHER STRIPDRAINS.**

DrainStar Z-Drain captures moisture from the soil as well as from a rising water table. And since Z-Drain collects the water beside the footer and not on top of it, Z-Drain provides an extra margin of performance and safety that conventional stripdrains just cannot match. And unlike drain tile and gravel, DrainStar Z-Drain is designed to work with the TUFF-N-DRI Basement Waterproofing System, to provide leak-free foundation wall protection.

**INSTALLED BY EXPERTS.**

DrainStar Z-Drain is designed to be used most effectively in combination with the TUFF-N-DRI Basement Waterproofing System. Your Select Barrier Solutions Contractor has the experience and training to ensure the highest quality installation of TUFF-N-DRI and DrainStar Z-Drain.



**Illustration 2.**

- A) Footing
- B) Foundation Wall
- C) TUFF-N-DRI Membrane
- D) WARM-N-DRI Foundation Board
- E) DrainStar Z-Drain



## Features & Benefits

### REDUCES BUILDER COSTS

- Less gravel to order per home
- Eliminates labor costs to install drain tile
- Less equipment on the job site
- Fewer drainage problems
- Lower service costs and less labor remediating drainage issues

### REDUCES CONSTRUCTION TIME

- DrainStar Z-Drain installed at same time as waterproofing

- No need to schedule drainage crews to install
- Landscaping completed quicker
- No need to clean-up piles of gravel

### REDUCES CAPITAL COSTS

- No stone slingers for footing drainage
- No skid-steers to move gravel around lot

### WATERPROOFING + DRAINAGE = BUILDER CONFIDENCE

- Systemized approach guarantees dry basements for 30-years

## Specifications

Physical Properties	Value	Test Method
<b>Fabric</b>		
Material	Polypropylene	
Grab Tensile Strength	110 lbs.	ASTM D-4632
Puncture Strength	65 lbs.	ASTM D-4833
Trapezoidal Tear	50 lbs.	ASTM D-4533
Mullen Burst Strength	215 psi	ASTM D-3786
Elongation	75%	ASTM D-4632
EOS (AOS)	70 sieve	ASTM D-4751
Permittivity	2.4 sec <sup>1</sup>	ASTM D-4491
Flow Rate	150 gal/min/ft <sup>2</sup>	ASTM D-4491
UV Resistance (after 500 hours)	70%	ASTM D-4355
<b>CORE</b>		
Material	Polystyrene	
Thickness - Dual Profile	7/16" and 1"	
Compressive Strength	4000 lbs/ft	ASTM D-1621 (mod.)
<b>PRODUCT</b>		
Flow capacity/unit width (hydraulic gradient = .1, loading 25 psi)	21 gal/min/ft	ASTM D-4716
Unrestricted In-flow Area	85%	

**DrainStar®**  
**Z-Drain**



**TREMCO**  
*Barrier Solutions*

800-876-5624 614-322-4420  
6402 East Main Street  
Reynoldsburg, OH 43068

NOTE: All information, drawings and specifications are based on the latest product information available at the time of printing. Constant improvement and engineering process make it necessary that we reserve the right to make changes without notice. All physical properties are typical values. Standard variations in mechanical properties of 10% and in hydraulic properties of 20% are normal.